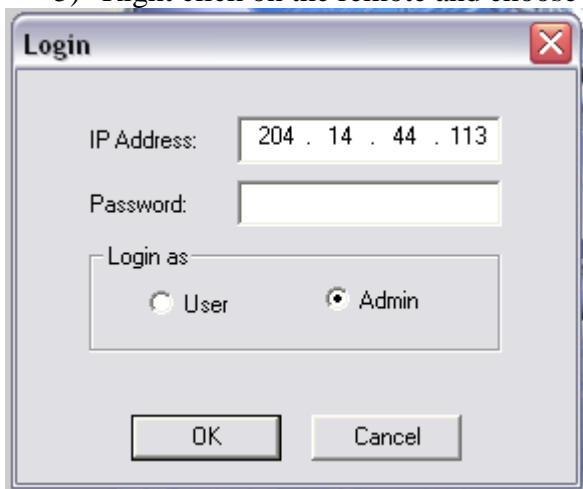


Procedure to Perform the Peak and Pole of the Antenna.

- 1) Connect the laptop to the LAN port in the back of the modem with a Ethernet Cross Over cable, and change the IP of the laptop to #.#.#.# (modem IP + 1)
- 2) To verify connectivity do a ping to #.#.#.# (Modem IP)
- 3) Open iSite program.
- 4) iSite program look like this when open:

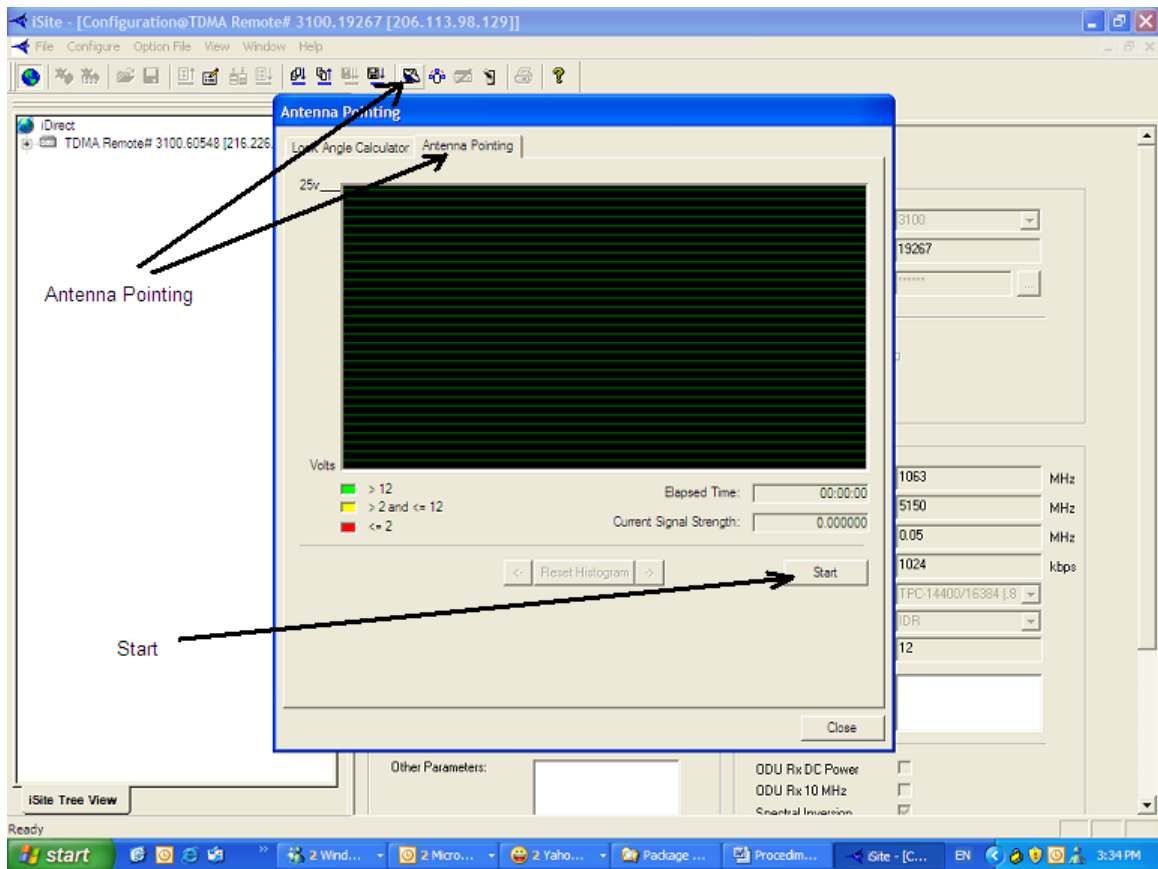


- 5) Right click on the remote and choose LOGIN



The IP shown is an example. Use password supplied by Hub managers (default IP is: **P@55w0rd!** or **iDirect**)


- 6) Connect Receive Cable from LNB to the port labeled “RX IN” in the back of the modem
- 7) Select the tab “Antenna Pointing”

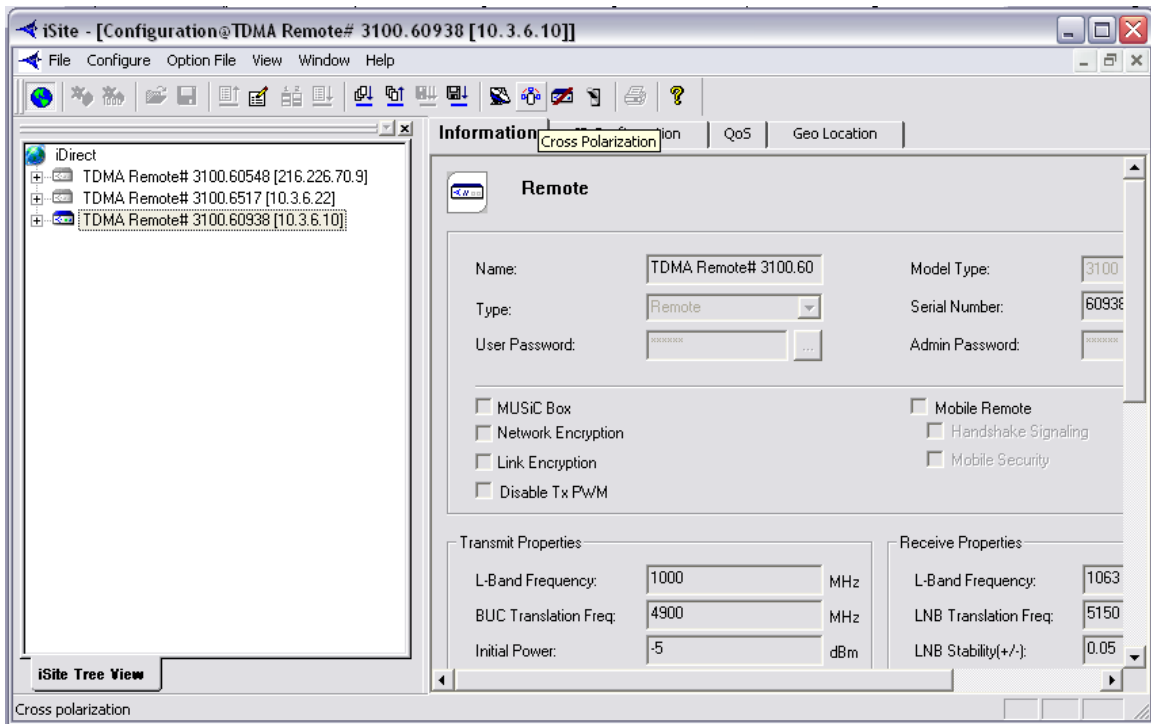


- 8) Press Start
- 9) Start moving the antenna slowly around the corresponding Azm and El until the software shows a signal level at least of 12Volts.
- 10) Call Newcom NOC for further instructions.

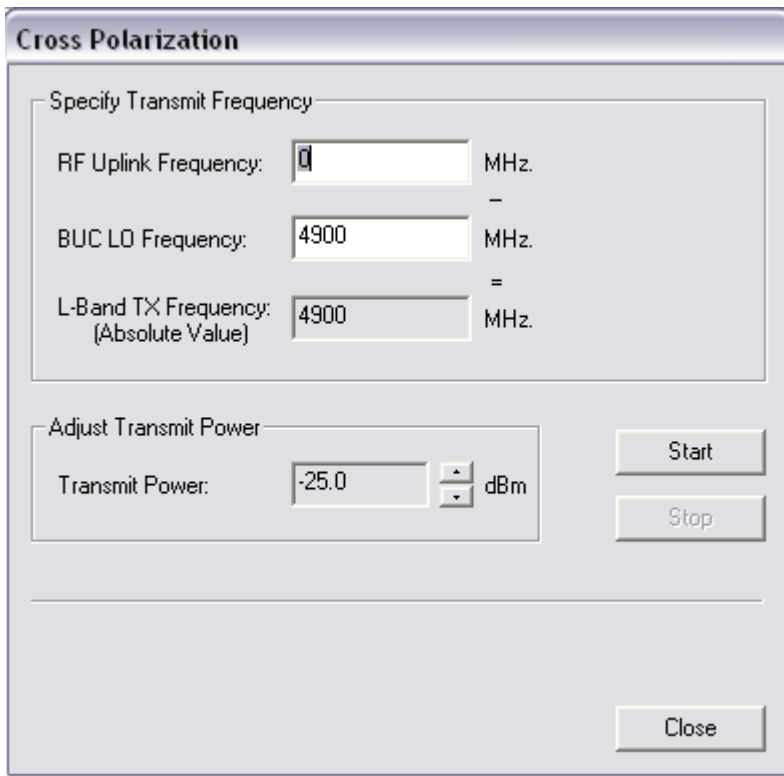
Bringing a CW (Pure Carrier) with the Net Modem

THE FOLLOWING STEPS MUST BE PERFORMED BY THE CUSTOMER WITH NEWCOM AND SATELLITE OPERATOR AT THE PHONE

- 1) Remove Rx Cable from the modem.
- 2) Click on Cross Polarization button 



Cross Polarization Window



- 3) Enter the frequency supplied by satellite operator on the RF Uplink Frequency window and hit START

- 4) Transmit Power might be changed as per Satellite operator request.
- 5) Start the fine alignment of the antenna following satellite operator instructions.
- 6) Once alignment is finished hit STOP as per satellite operator request.
- 7) Connect receive cable in the modem and reset it.
- 8) If remote is active in the iBuilder platform it should come up in the network.