



Software Installation Manual



DIRECWAYTM

MOTOSAT
advanced mobile satellite systems

MotoSAT Corporation
Updated Monday, April 16th, 2003

WELCOME!

TO THE WORLD OF MOBILE INTERNET ANYWHERE!

COMPUTER MINIMUM REQUIREMENTS

- Pentium III 500 MHz or Celeron at 800 MHz.
- 128 Megs RAM.
- 120 Megs hard drive space.
- CD-ROM Drive.
- Windows 2000 Professional, XP Home or Professional
- Available USB Port.
- Available Serial Port.
- A working Dial-up Modem (for one time connection to activate dish)
- System Disk for Windows (if some required programs were not installed originally on your windows system).
- 800 x 600 monitor display

NOTE OF INTEREST - The *DataStorm Software is used to point* the Satellite Dish, while the *DIRECWAY software is used to connect* your computer to the Internet via the 2-way satellite. Once both of these programs are loaded to your computer, you will only have to concern yourself with the DataStorm software to raise the dish and lower the dish any time you move.

GET A BILLING ID! - Before you can complete the DIRECWAY installation, you **MUST** acquire a special "MOBILE" billing ID from your Internet Provider. The billing ID is used to commission the DIRECWAY modems. To get your billing ID please call your Internet Service Provider. If you do not know who they are, please contact your dealer.

WARNING - UNINSTALL ANY EXISTING HUGHES SOFTWARE

If you have any version of DirecPC or DIRECWAY on your computer before you load the DIRECWAY software.... YOU MUST UNINSTALL THE PREVIOUS VERSION OF THE SOFTWARE.

To check to see if you have these programs loaded... Click on the "START" button and the choose "PROGRAMS". You will see a DirecPC or a DIRECWAY folder. If so, choose this folder and select "UNINSTALL" from the folder selection. This procedure will uninstall the DIRECWAY or DirecPC software.

SECTION 1 - INSTALLING DIRECWAY SOFTWARE

Make sure all open applications are closed prior to beginning the installation.

TURN ON DIRECWAY MODEMS

Make sure the DIRECWAY modems are turned on and the USB cable from the DIRECWAY modem **IS NOT** plugged into the computer at this time. **The drivers for the USB cable will be loaded during the DIRECWAY software installation.**

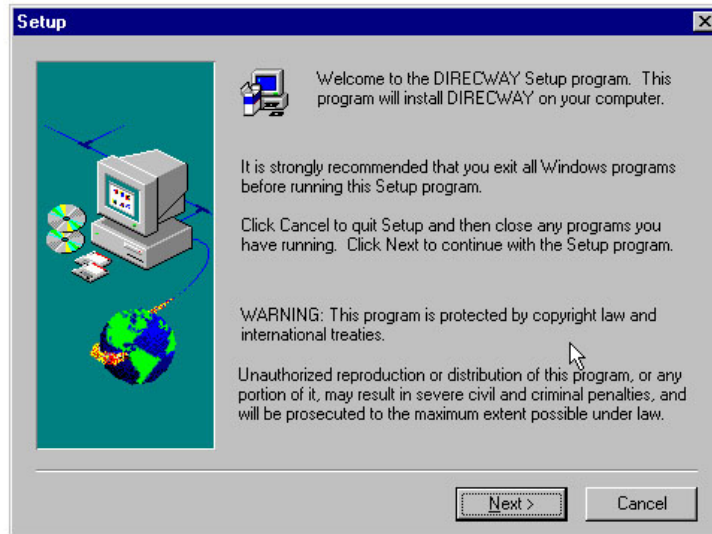
INSTALLING THE DIRECWAY SOFTWARE FROM CD

Insert the DataStorm CD-ROM onto the Computer and open up the CD-ROM from the "My Computer" icon on your Windows Desktop.

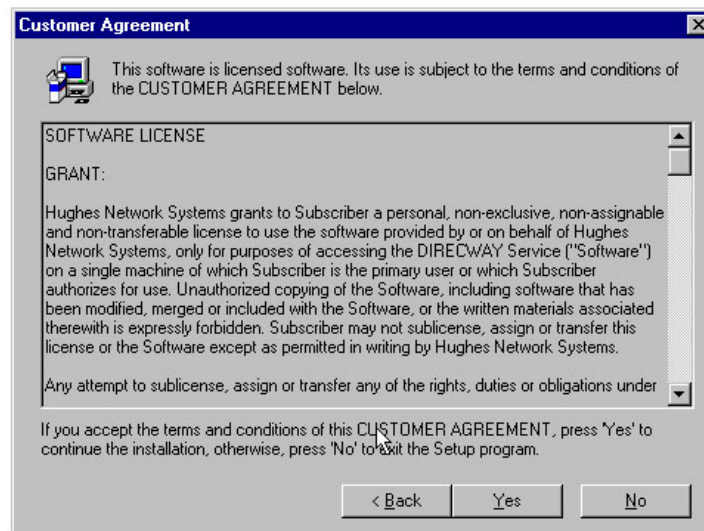
Inside the CD-ROM, open the "DIRECWAY" folder and run the program "DIRECWAY Installer" program. When you do this, the below screen will appear:



Click on "**Install Software**" to begin installation of the DIRECWAY Software. Please follow the onscreen instructions of the Setup program.



When the above window appears... Click on **“Next”**



IMPORTANT - The customer **MUST** click on the **“YES”** button to continue on the Software License screen. The Installer is not allowed to do this without customer authorization.

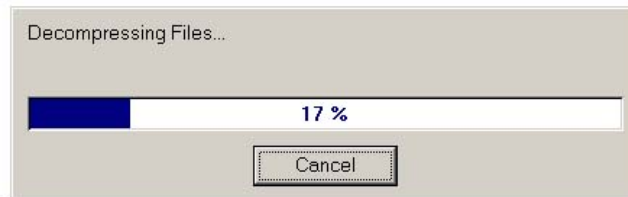


When the above window appears... **PLUG IN THE USB CABLE FROM THE DIRECWAY MODEM TO THE COMPUTER.** This will install the USB drivers to the computer.

The screen will automatically disappear when the USB driver is loaded.

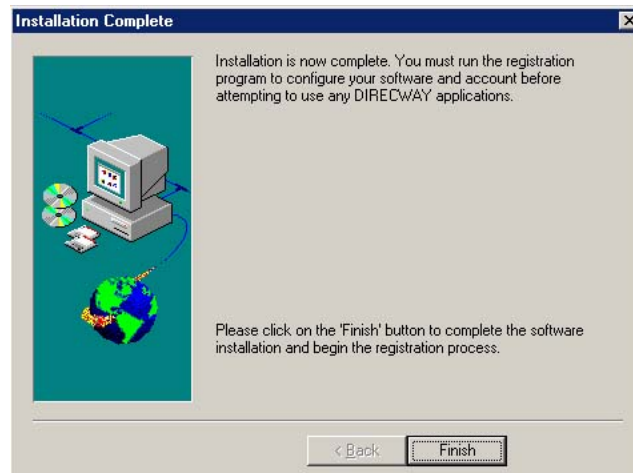
If you do not see this screen when you install the DIRECWAY Software, your computer may have loaded a bad driver automatically. To remedy this problem, call your ISP provider or MotoSAT for assistance.

A progress bar will appear and software will be loaded to your computer.



During the DIRECWAY installation, if a "Read Only File Detected" message appears, select YES to keep the existing file (you do not want to overwrite the file). This is an operating system file and not a **DIRECWAY** file.

After the DIRECWAY software installs, the computer may ask to be rebooted... If so, reboot the computer.



Once installation of the DIRECWAY software has completed, click on the "Finish" button to automatically begin the registration phase of DIRECWAY. The Registration procedure is called "Web Setup".

SECTION 2. PERFORMING A "WEB SETUP"

Web Setup is the process in which your DIRECWAY modems are "Commissioned" to the Billing ID supplied to you by your provider. Contacting the Hughes Network Operations Center does this. **If you do not yet have a billing ID, you must have this before you begin web setup.**

Please visit www.motosat.com/register.html for information on receiving your Billing ID.

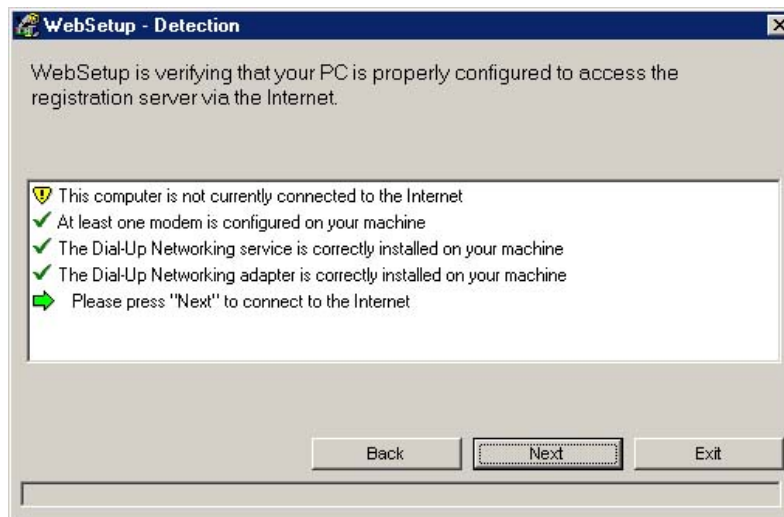
Web Setup requires that you have a standard analog **phone line and a dial up modem.** Currently, there is no way around this. You must have some way of connecting your computer to an analog phone line. If you can't bring the phone line to you, then take your computer and modems to the phone line.

NOTE - Web Setup can be started manually by clicking on the "START" button, then selection "PROGRAMS" then "DIRECWAY" then "WEB SETUP". Below is the screen that will appear.



Click on the **Next** button to begin...

Web Setup will first see if you are already on the Internet before it tries to dial out to a 1-800 number that connects the computer directly with the DIRECWAY Network Operations Center.



Click on "Next" to bring up the modem screen.



Choose your active modem on your computer and click on the Next button, and the modem will begin to dial into the Network Operations Center.

TROUBLESHOOTING.

Your dial-up modem (used for the initial commissioning your modems) may fail or become stuck in the "working" mode while downloading special keys from the Internet. If this happens, exit the program (Web Setup) by clicking on the "x" on the top right of the Web setup window and launch it (Web Setup) again. You can do this by clicking on the "Start" button then "Programs" then "DIRECWAY" then select "Web Setup

PROBLEMS CONNECTING? - If you still have problems connecting to the DIRECWAY service using their 800 number, simply connect your computer with any ISP (not AOL) using your dial-up modem and once online, simply re-run Web Setup... This is done by clicking on "Start" then "Programs" then "DIRECWAY" then "Web Setup". Web Setup will notice that you are already online and will contact the NOC through the Internet.

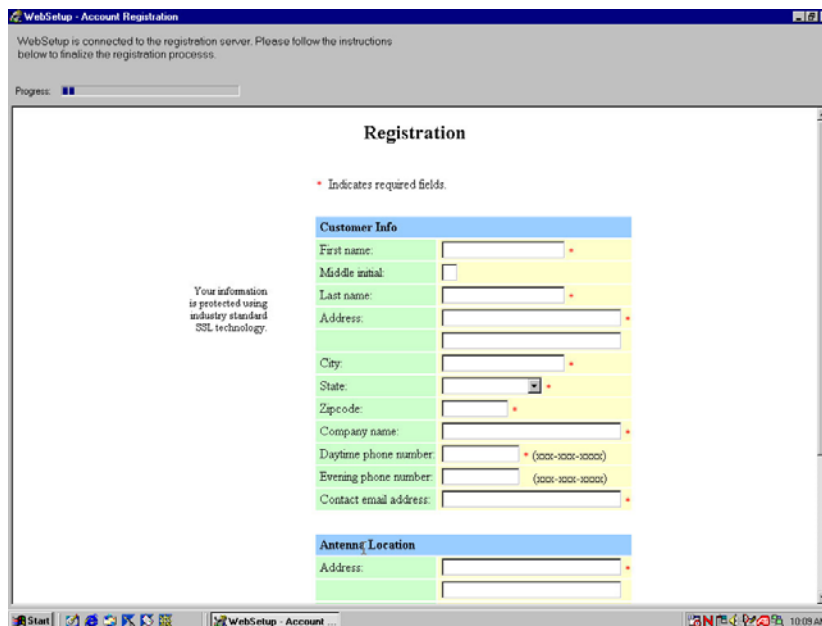


Once the computer has connected to the DIRECWAY network, the modem will have Adapter KEYS received as is show above.

The process of Web Setup is not yet complete and you are not yet disconnected from the DIRECWAY server. Please click on the **Next** button.



Web Setup will now load the “Subscriber Agreement” screen. The **CUSTOMER** will need to read and scroll down to the bottom of the page to click on the “**I agree**” button if you agree with the terms of the contract.

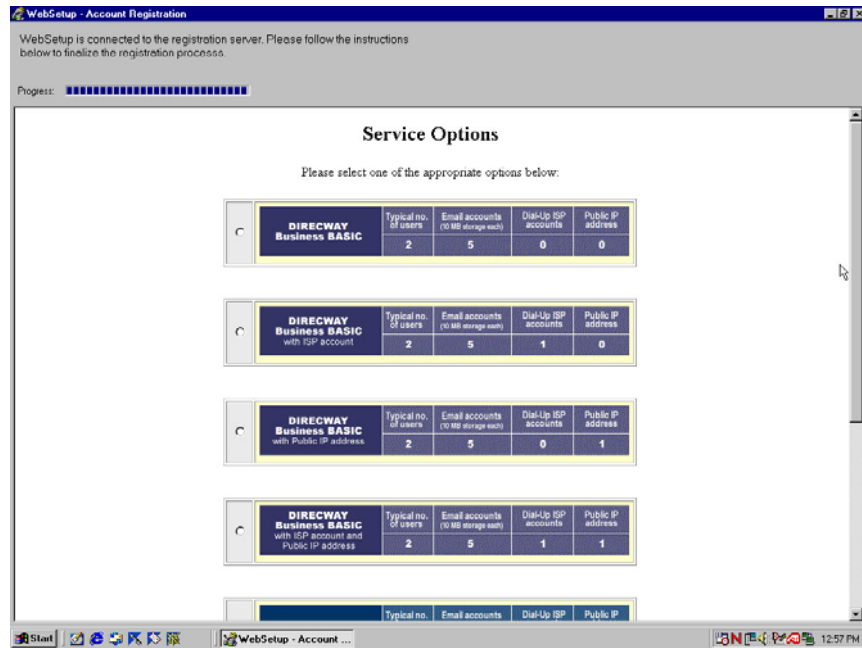


Fill out the user information on the above screen... You will also supply your Billing ID on this screen. When you are finished, click on **CONTINUE** at the bottom.

NOTE -If you do not yet have a billing ID, please contact your Internet Service Provider for your special Mobile Billing ID. If you do not know who your Internet Service Provider is, please contact

your dealer. You may quit the Web Setup program and restart it again at a later time by clicking on “Start” then “Programs” then “DIRECWAY” then “Web Setup”.

NOTE- The DataStorm has “MOBILE” Billing ID’s that are approved for mobile use.



Please choose the service package you have purchased when you received your billing ID.

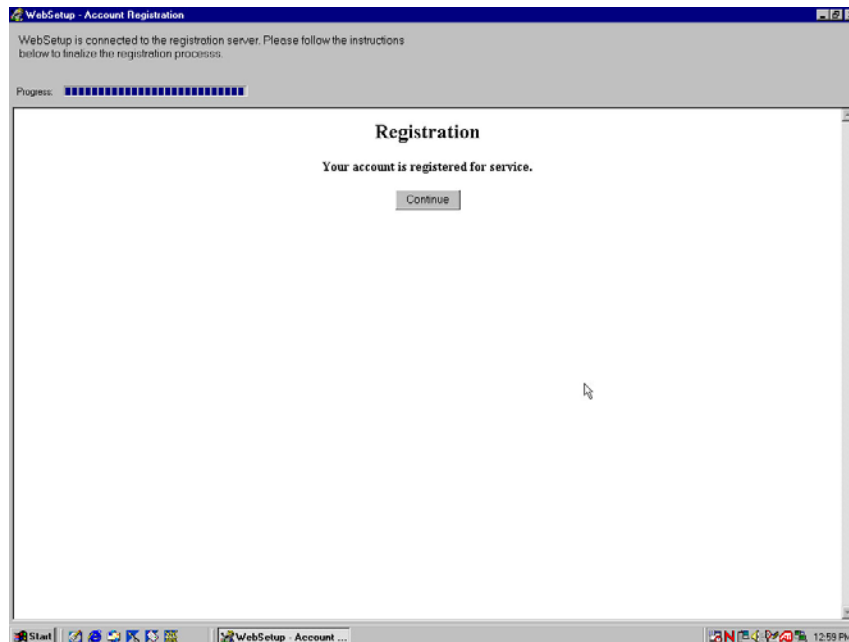


You have the option of having E-Mail accounts on the DIRECWAY service. We recommend that you continue to use your existing E-Mail account(s) with your current ISP.

If you do desire to have E-Mail accounts on the DIRECWAY service, please write down all of the E-Mail information when you create new E-Mail accounts. (Username, Password, E-Mail address, SMTP Server, POP3 Server, POP3 Login). Use the “**Create Account**” button for each E-Mail account you create... When finished, click on “**Continue**”.



On the next screen, you may have the option of signing up for a dial-up account. Since there is no need for a dial-up ISP account with DIRECWAY (since it is a 2-way satellite dish) we recommend you simply click on the “**Continue**” button to bypass this option.



When you see the above screen, the DIRECWAY Registration Server has recorded your information, commissioned your modems and has disconnected you from the phone line (unless you were already connected to the Internet).

Click on **Continue**.

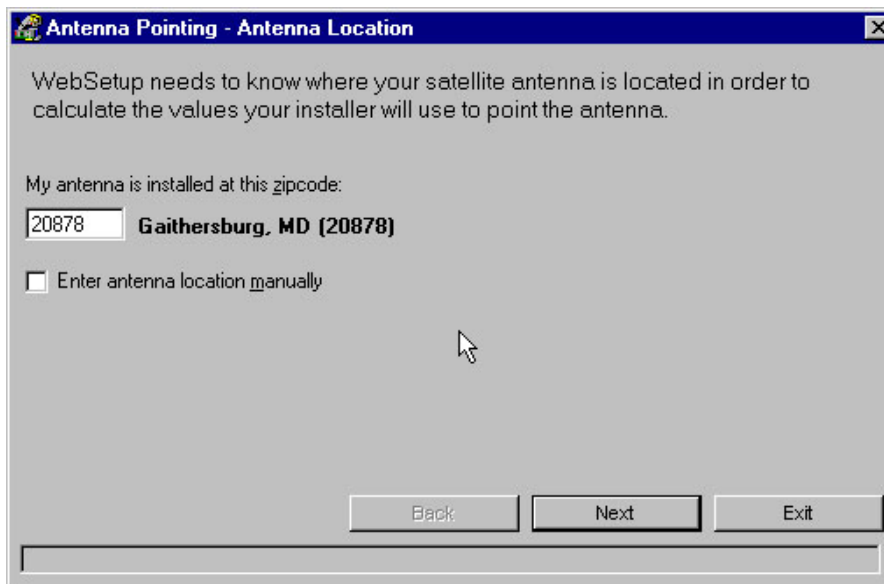


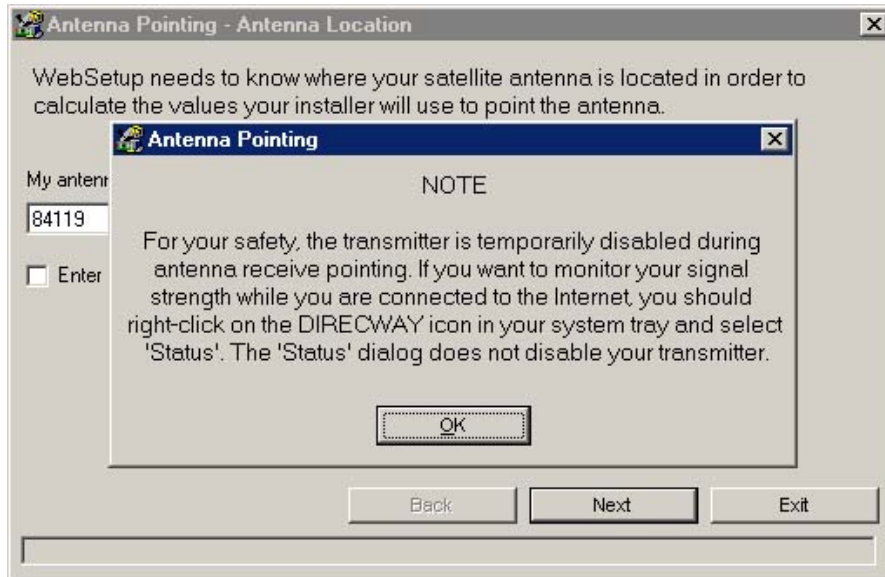
The DIRECWAY software is now updating your network settings... when it is finished... Click on the “**NEXT**” button to complete this section of Web Setup.

PERFORMING ANTENNA POINTING

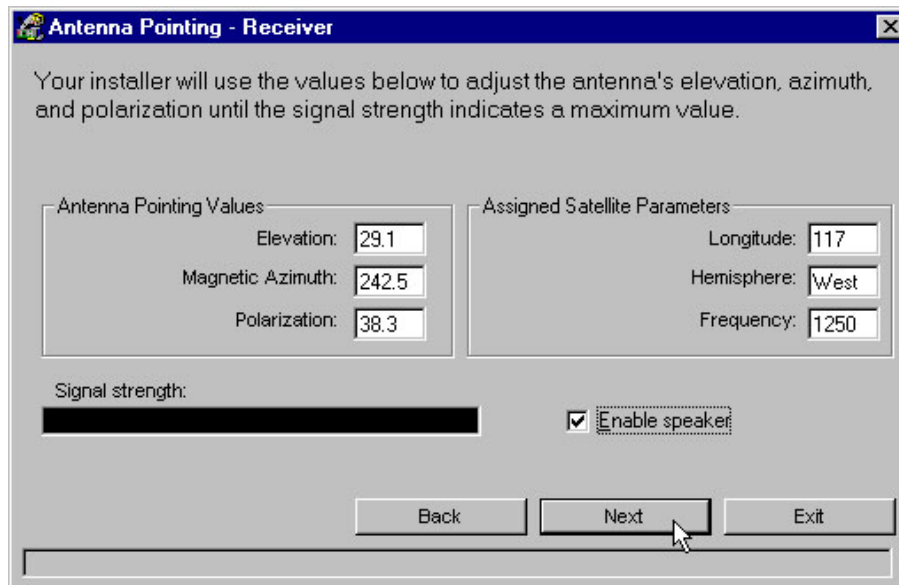
The Web Setup program automatically begins the “Antenna Pointing” program. Please enter in the zip code of where the dish is **currently** located and click on **NEXT**.

NOTE - While you will not be moving the dish at this time, you must proceed to the end of Antenna Pointing.

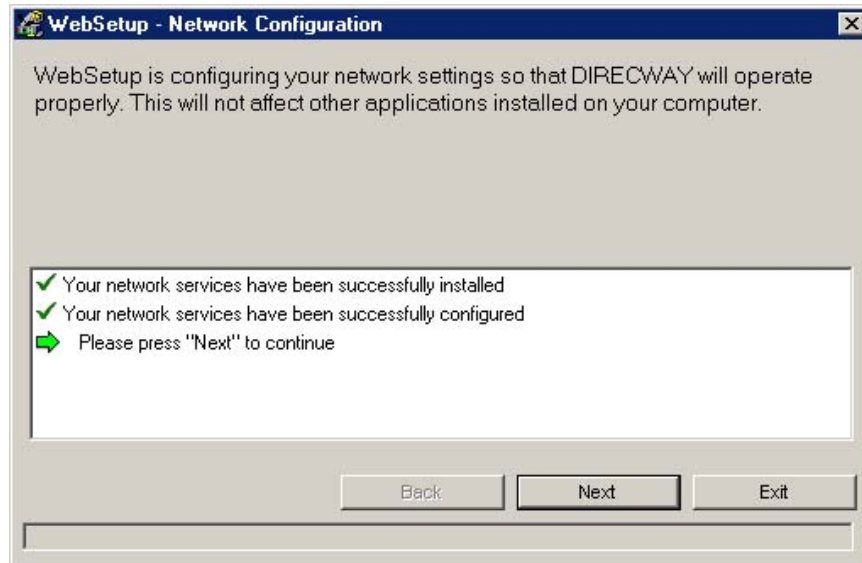




The Transmitter is put on “Standby” during this process... Click on “OK” and the “Next”



Web Setup for the DataStorm system is almost complete. Click on the **NEXT** button. **There is no need to make any adjustments to the satellite dish at this point in time. You are simply trying to complete a full install of “Web Setup”.**



Above is the final screen of Web Setup. Click on the **Finish** Button when it is complete.

CONGRATULATIONS!!! Web Setup is now complete... That was a big step.

Now... Reboot the computer.

When the desktop appears, look for a “**BE**” icon to appear within a minute on the taskbar at the bottom right corner of the desktop. This means the DIRECWAY software has loaded and is detecting the modems.



If DIRECWAY does not load, click on “Start” then choose “Programs” then “DIRECWAY” then “Navigator”. This will place a “BE” icon on the taskbar. ...If not, the modems either turned off, or web setup did not performed properly.

TROUBLESHOOTING HELP – Open up the DataStorm Folder, and then open up the “Trouble Shooting” folder. Locate and open the “Troubleshooting” file.

If you have the “BE” icon, DIRECWAY software is loaded and working fine.

Next step is to run the DataStorm software and have the DataStorm dish point at the DIRECWAY satellite.

