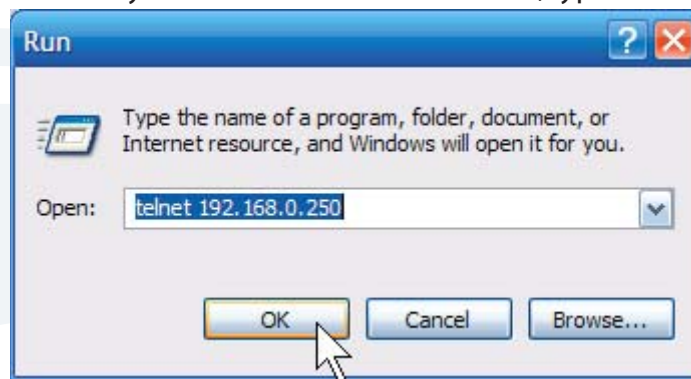


DATASTORM D2 AUTO COMPASS CAL.

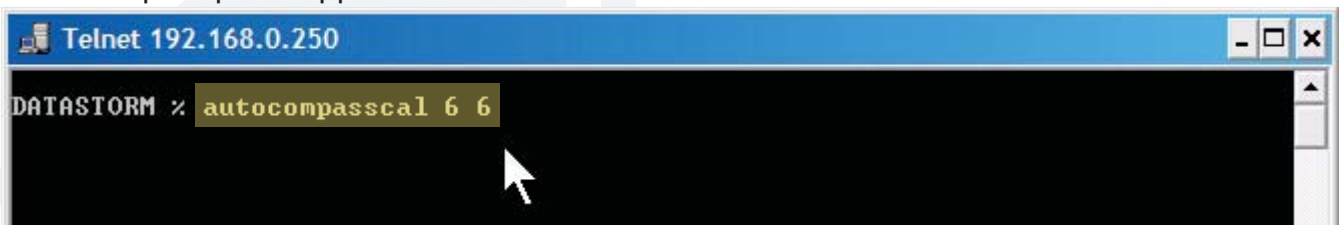
DataStorm D2 software v3.7.1 and higher have a special feature to automatically calibrate the compass without moving your vehicle. The DataStorm mount will calibrate the compass through a type of modified test dish procedure. This document will provide the instructions.

The procedure can only be done through a DataStorm D2 controller [v3.7.1 or higher; This calibration will NOT work on the legacy upper control boards between the DataStorm's arms; refer to the whitepaper 'DataStorm D2 Upper Control Board Versioning' for more information on your upper control board.

1. **Stow** your DataStorm dish.
2. Turn on your D2 for normal operation.
3. In Windows click **Start>Run**. We will open a telnet session to the D2.
4. Now type the following below into the **Run** command line. The IP address listed is the default IP address of the D2. If your D2 has a different address, type that in instead.



5. A telnet session will open to the D2. You can tell it's connected because the **DATASTORM%** prompt will appear.



6. To perform the Auto Compass calibration, type **autocompasscal 6 6**. To breakdown the command, autocompasscal is the command, the first 6 the number of points you want the DataStorm to take a reading from, and the last 6 is how far off of the azimuth stow position you want the DataStorm to start taking readings from. Click **Enter** to start the calibration. The dish will raise up perpendicular to the mount and move through its reading points as if it was peaking on satellite for 5-10 seconds.

You can take readings for calibration from 2 to 350 points. Usually an Automatic Compass calibration can be accurately performed with readings on 2-6 points.

Please call MotoSAT for information on this or any other technical subject
contact MotoSAT at:
1-800-247-7486

