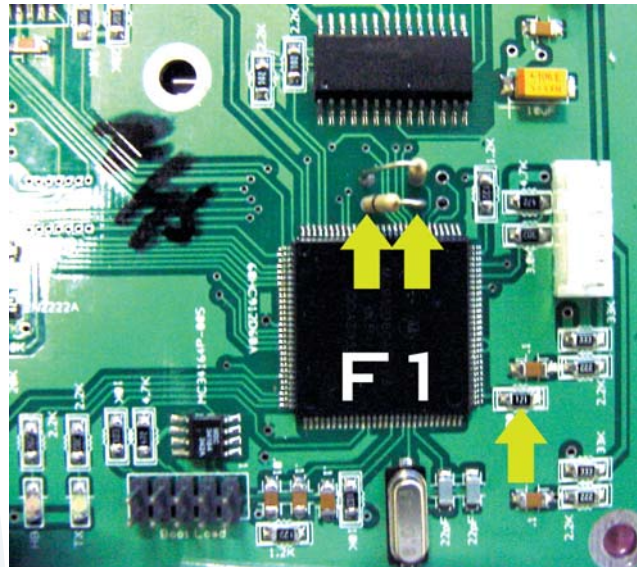


DATASTORM UPPER CONTROL BOARD F1 vs. F3

This visual comparison shows the difference between a F1 UCU and a F3 UCU. These subtle but important changes help the D2 or D1 controller to recognize which kind of mount it's dealing with.

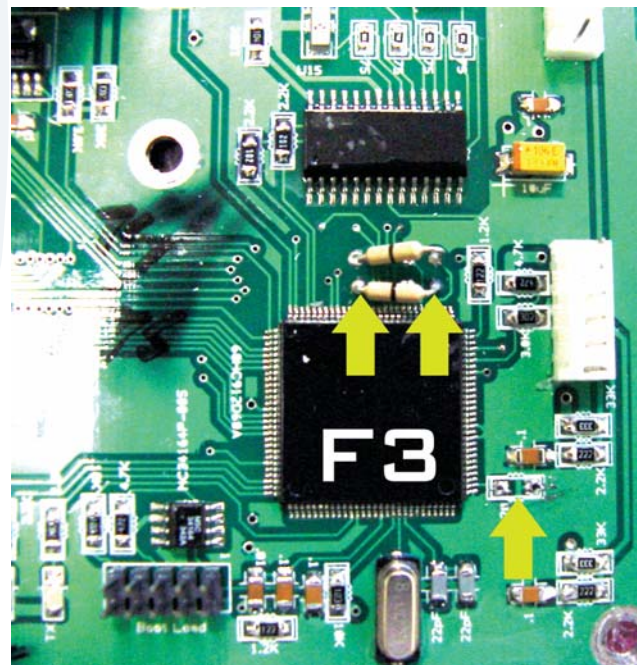
F1 NEW UCU

Note the yellow arrows. Also, on the F1 UCU, the resistor on the bottom right corner of the UCU is present unlike the F3 UCU.



F3 NEW UCU

Note the yellow arrows. Also, on the F3 UCU, the resistor on the bottom right corner of the UCU is missing while the F1 UCU has this resistor.



Please call MotoSAT for information on this or any other technical subject
contact MotoSAT at:
1-800-247-7486