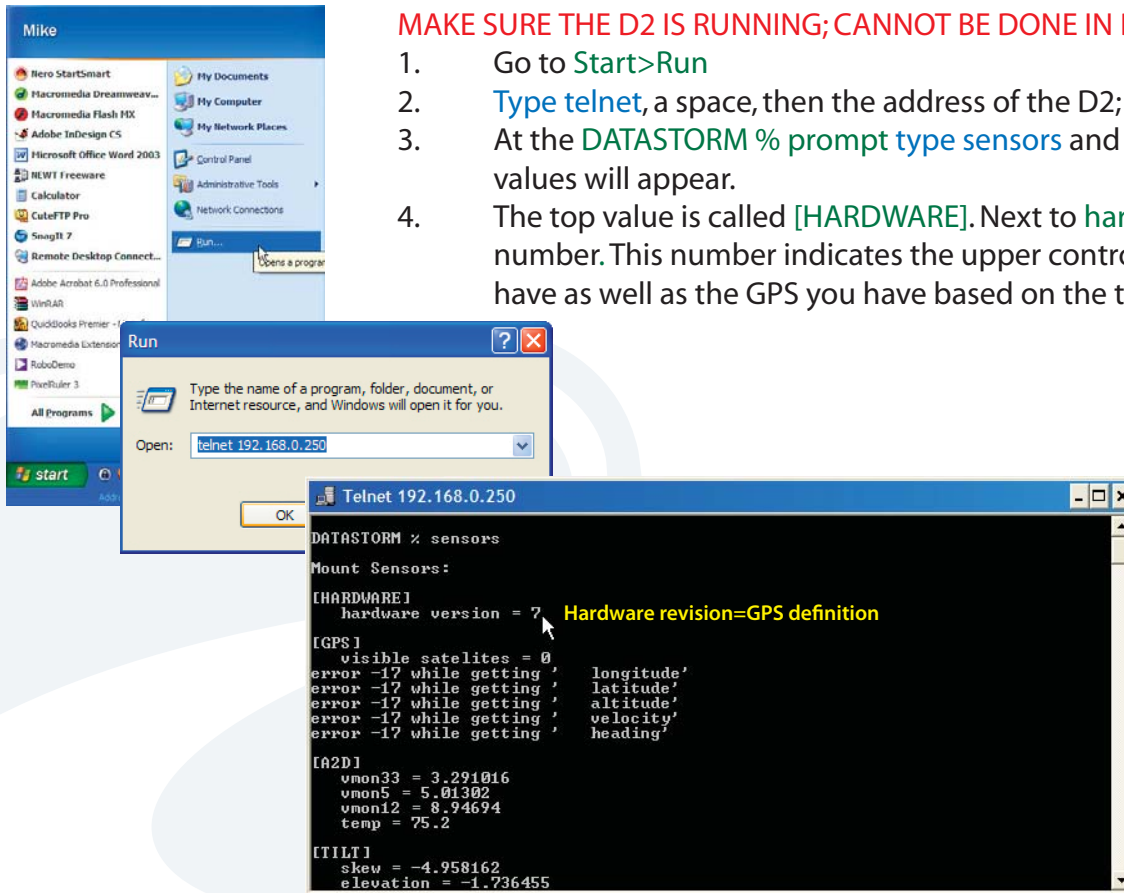


DATASTORM UCU VERSION FOR GPS

The purpose of this white paper is to find which GPS module you have on you current upper control board. This procedure only works with the D2*. *[It is possible to check with the D1 controller but that information will be given in a separate white paper.]

MAKE SURE THE D2 IS RUNNING; CANNOT BE DONE IN BOOT LOADER MODE

1. Go to **Start>Run**
2. Type **telnet**, a space, then the address of the D2; click **OK**
3. At the **DATASTORM %** prompt type **sensors** and press enter. A list of values will appear.
4. The top value is called **[HARDWARE]**. Next to **hardware version** is a number. This number indicates the upper control board revision you have as well as the GPS you have based on the table below:



HARDWARE VERSION NUMBER DEFINITIONS

- 0* --- F1 old-style upper control board [sits between the arms]
- 1* --- F3 new-style upper control board with the Trimble GPS [has the wire antenna]
- 3* --- F1 new-style upper control board with the Trimble GPS [has the wire antenna]
- 5** --- F3 new-style upper control board with the new Furuno GPS [totally integrated design]
- 7*** --- F1 new-style upper control board with the new Furuno GPS [totally integrated design]

* Can run any software build of the D2 software to date

** Can only run software builds **3.6.2 and greater**

*** Can only run software builds **3.6.2 and greater** & is non-compatible with D1 controller

Please call MotoSAT for information on this or any other technical subject
contact MotoSAT at:
1-800-247-7486

